



## **Kick off Organizational Meeting Nov 10th 7pm**

### **Friends of Recreation**

Committed to Capital Improvements  
to recreation facilities.

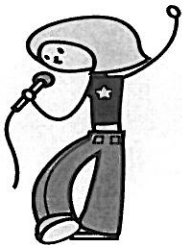
including fields, courts, gyms and pools.

Seeking individuals with business experience to create the  
Board to operate this 501c3 non profit entity.

Be apart of the future development of open space. Bring the  
dream of new facilities to life - gyms - courts - pool

Create space for running, biking,  
x-country skiing, birding and so much more.

Not all to be accomplished at once,  
but any project needs to  
begin with the first steps.



## **Dan Kane - East Longmeadow Idol Youth Performance Training**

April 19-23 Vacation Week Mon - Fri 9 -2  
at Birchland Park Middle School

Open to youth ages 8 -14 or 3rd - 8th grade  
Registration is limited.

Residents can begin registering Dec 1st - Non residents Dec 10th

Finale to week of training culminates in a

## **Dinner Show - at Elm Crest Country Club**

Performances by participants solo or in chorus

Friday April 23 6:00pm - 9:00pm

Benefit for Friends of Recreation -

Tickets Available for sale after Jan 4th, 2010

Kid Friendly Buffet Dinner

